

The Great Wall of China



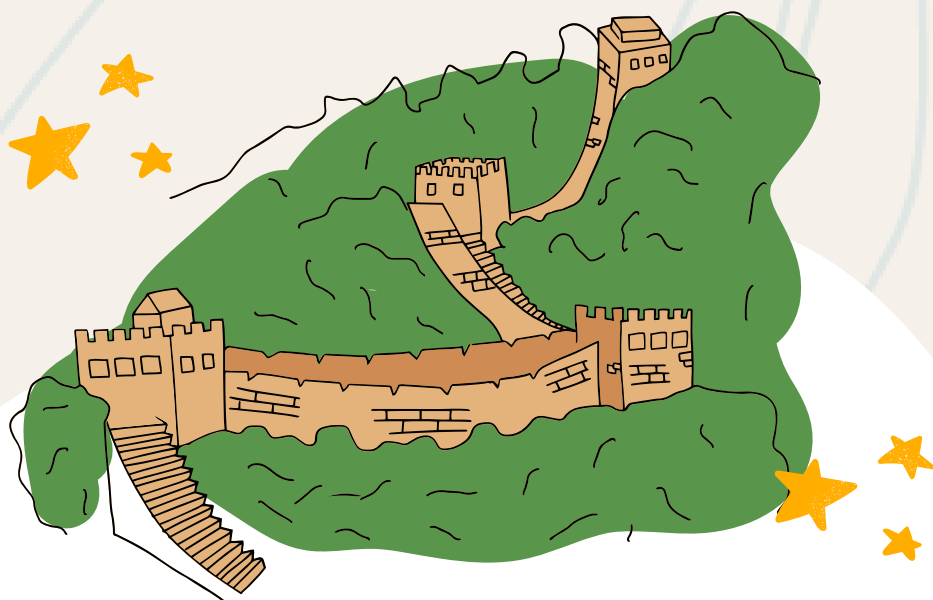
Global Links

The Great Wall of China is one of the most famous historical sites in the world. It is a series of fortifications, built across modern day China in sections, to protect ancient Chinese states from northern invaders. It was then used for border controls and a transport corridor, among other things. It literally translates as 'long wall' and is one of the Seven Wonders of the World.

The Great Wall of China is one of the Seven Wonders of the World. It is an ancient fortification, which exists across all cultures historically as a natural expression to protect citizens from invaders and outside forces.

There are many different types of ancient fortifications built in different periods in different places around the world. Such as, Hadrian's Wall, built by the Romans across the width of northern England.

Can you name any ancient fortifications in your country?



Vocabulary

Long (adj)



zhǎng
长

Wall (n)



qiáng
墙

Build (v)



jiàn
建

Curriculum Links

Math, Art

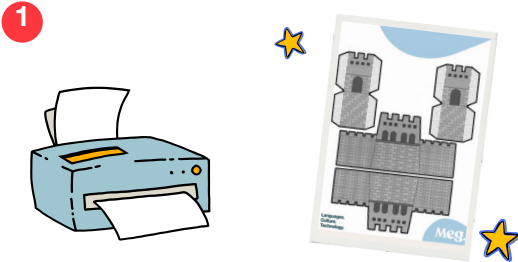
Equipment

 Calculators

[Great Wall of China Cut Out Activity](#)



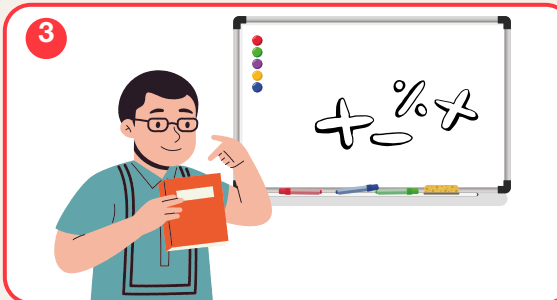
Method



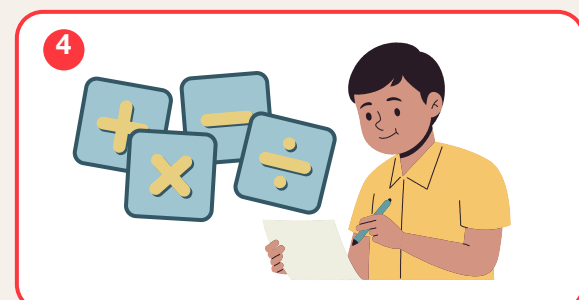
Print the [Great Wall of China Cut Out Activity](#) and identify the symmetry in the watchtowers and also the wall itself e.g. two way symmetry or four way symmetry.



Explain to students that The Great Wall is a famous cultural icon and you're going to explore some basic number facts about it [here](#).



Set some age appropriate Maths challenges for students to complete.



Ask students to create their own Maths challenges for each other using the Great Wall data info you provide.

Explore!

Symmetry exists in buildings all around the world, across all cultures. Can you find some examples from your own country/culture to share?

Find some examples from Chinese, Hispanic, Indian, Indigenous, or other cultures too!

Share your activity images with us!
Tag us on social media
[@MegGlobalEd](#)